



**The Invincible Power  
Behind Safe, Effective  
Bullet Collection and Disposal.**

**PRODUCT GUIDE**

# Choose Your Bullet Bunker

With a variety of traps to choose from, we're confident there is one to fit your every need. Match your preferred caliber with our most popular traps using the chart below. Visit our website for a more complete list of calibers.

<div>Green Tested:Recommended</div> <div>Yellow Will Handle Safely</div> <div>Red Not Recommended</div> <b>Calibers</b>	Scout	Scout Recon	44LS	44LS Magnum	44LS Ultra Magnum	44LS Recon	44LS Magnum XL	Sniper III Elite	Freedom 20	Fredeom Elite	Desert Storm 20	Desert Storm F/A	Kryptonite 20	Goliath Series	Goliath Series F/A	Talon 21	Scorpion	Titan
.17HMR -.22MAG	✓	✓	✓	✓	✓	✓	✓	✓	✓	✓	✓	✓	✗	✓	✓	✗	✓	✓
.204RUGER- .223WSSM	✗	✗	✓	✓	✓	✓	✓	✓	✓	✓	✓	✓	✓	✓	✓	✓	✓	✓
6MM BR- 6MM REM	✗	✗	✗	✗	✓	✓	✓	✓	✓	✓	✓	✓	✓	✓	✓	✓	✓	✓
25WIN - 6.5REM MAG	✗	✗	✗	✗	✓	✓	✓	✓	✓	✓	✓	✓	✓	✓	✓	✓	✓	✓
.303BRIT - .325WSM	✗	✗	✗	✗	✓	✓	✓	✓	✓	✓	✓	✓	✓	✓	✓	✓	✓	✓
.338MARLIN - .338WIN	✗	✗	✗	✗	✗	✗	✗	✓	✓	✓	✓	✓	✓	✓	✓	✓	✓	✓
.338MAG - .330 DAKOTA	✗	✗	✗	✗	✗	✗	✗	✗	✓	✓	✓	✓	✓	✓	✓	✓	✗	✓
.400N.E. - .375RUM	✗	✗	✗	✗	✗	✗	✗	✗	✓	✓	✓	✓	✓	✓	✓	✓	✗	✓
.375WEATHERBY - .404JEFFERY	✗	✗	✗	✗	✗	✗	✗	✗	✗	✓	✗	✓	✓	✗	✓	✓	✗	✓
6.5SPC - 7MM DAKOTA	✗	✗	✗	✗	✗	✗	✗	✓	✓	✓	✓	✓	✓	✓	✓	✓	✓	✓
.280REM - 45-70GOU	✗	✗	✗	✗	✗	✗	✗	✓	✓	✓	✓	✓	✓	✓	✓	✓	✓	✓
.450N.E. - .500-465N.E.	✗	✗	✗	✗	✗	✗	✗	✗	✗	✓	✗	✓	✓	✗	✓	✓	✗	✓
.425WESTLEY RICHARD - 10.57METEOR	✗	✗	✗	✗	✗	✗	✗	✗	✓	✓	✓	✓	✓	✓	✓	✓	✗	✓
.450 MARLIN	✗	✗	✗	✗	✗	✗	✗	✗	✓	✓	✓	✓	✓	✓	✓	✓	✓	✓
.458WIN-50BMG/A.P.	✗	✗	✗	✗	✗	✗	✗	✗	✓	✓	✓	✓	✓	✓	✓	✓	✗	✓
.50 BEOWULF	✗	✗	✗	✗	✗	✗	✗	✓	✓	✓	✓	✓	✓	✓	✓	✓	✓	✓
.50 ALASKAN	✗	✗	✗	✗	✗	✗	✗	✗	✓	✓	✓	✓	✓	✓	✓	✓	✓	✓
500JEFFERY - 700N.E.	✗	✗	✗	✗	✗	✗	✗	✗	✓	✓	✓	✓	✓	✓	✓	✓	✗	✓
.23 REM / 5.56	✗	✗	✗	✗	✗	✗	✓	✓	✓	✓	✓	✓	✓	✓	✓	✓	✓	✓

*\*For a full list of tested calibers, visit our website or ask a representative about specific shooting power.\**





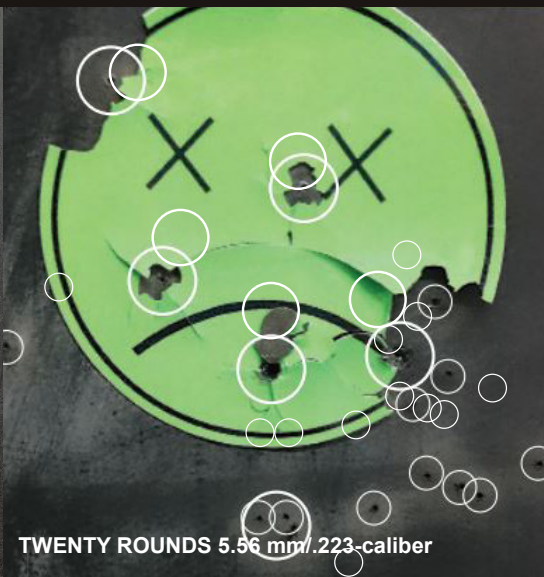
## The Bullet Bunker: Built Out of Necessity

The Bullet Bunker was created out of strong desire to build a better, more powerful containment system that not only stops bullets but keeps shooters, and the environment around them, safe from ricochet and debris.

Perfect for gunsmiths, police, sports clubs, gun enthusiast, the military and more, the Bullet Bunker uses engineering smarts and innovative design to safely slow down and halt bullets without spray or fragmentation.

Bullet Bunkers have the power to stop and contain everything from .22 caliber rimfire to .50 BMG, and because projectiles are stopped before impacting on a hard wall, bullets are sometimes left nearly intact.





## A Revolution In Bullet Trap Technology

Stopping projectiles and trapping their byproducts is the Bullet Bunker's mission. How does it do it? Through a very unique – and trusted – engineering principle.

### How It Works

The Bullet Bunker bullet trap consists of a specially designed face of rubber with layers of ballistic fabric laminated in between. This ballistic fabric, similar to the product used in bullet-proof vests, is a tough and rugged polyester-nylon blend. Behind this sheet is a specifically engineered ballistic medium that is then loaded into a steel box behind the face.

When bullets go through the face of the Bullet Bunker, deceleration immediately begins as bullets hit all of the medium pieces in the box at different angles resulting in the bullets coming to a quick standstill. It's a process of energy transformation known as inelastic collision – and it's what makes the Bullet Bunker so durable, safe and reliably effective.

### The “Green” Machine, An Environmentally-Friendly Result

It's a responsible containment system that effectively prevents harmful metals like copper and lead from entering the air and ground. Copper and lead recovery with the Bullet Bunker is simple -- and could even be profitable!

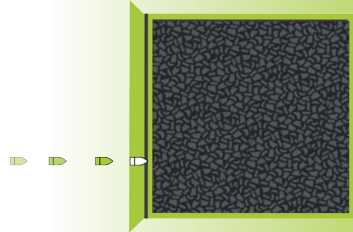


# Bullet Stopping Power

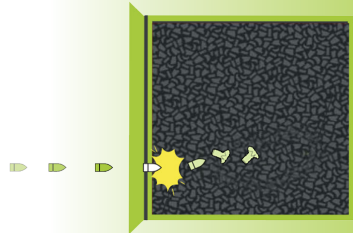
## Our Self-Healing Face Stands The Test of Time

The face panel of the Bullet Bunker unit can take thousands of rounds before needing to be replaced. If and when the face shows signs of wear, it can be manually replaced by removing a few bolts and opening/removing the front collar.

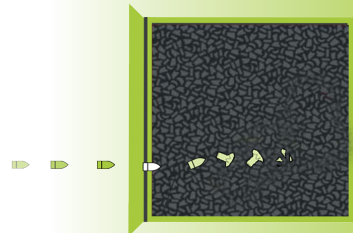
1. A speeding bullet pierces the Bullet Bunker's self-healing replacement panel and is slowed down by the reinforced ballistic layers.



2. The projectile collides with hundreds of scientifically-engineered ballistic compound medium, rapidly slowing its momentum.



3. As a last defense, our patented AR-500 steel plate and medium absorb the bullet's energy, bringing it to a complete stop.



### CAUTION:

Please practice safe lead removal. Use caution when removing bullets by wearing protective gloves and/or washing your hands after disposal. Dispose of all lead properly following the EPA guidelines. Safety Glasses and respirator needed to clean out trap.





# 15,000 Rounds

The Bullet Bunker's front panel or ballistic rubber sheets are designed to be self-healing and withstand thousands of rounds before losing effectiveness. In testing, front panels have maintained functionality after absorbing more than 50,000 rounds. The type of round you utilize will determine how long the front panel will last; for example, Spitzer bullets cause less damage to the ballistic rubber sheet than wad cutter's or shotgun slugs. Typically users replace the face panel between 10-15,000 rounds.

## **Caring for Your Bullet Bunker**

Once you are ready to replace the shooting panel or ballistic medium, follow these three simple steps. You can find video demonstrations on our website or Youtube channel.

### **Step One: Remove the Collar**

There are two options to remove the reflective collar. Either 1). For full collar removal: carefully loosen and remove the side and bottom bolts securing the collar to the box leaving the top two bolts in place to support the collar, OR 2). Hinged versions: remove bolts on one side of the trap to pivot the collar out of the way.

### **Step Two: Remove and Replace Ballistic Medium**

While removing the material, separate the medium from the spent rounds, taking care to preserve any medium that is still in good condition for reuse when refilling the trap. After the box is sufficiently cleaned out, replace the front panel and collar by securing them with the bolts you previously removed. Next begin filling your Bullet Bunker by replacing the ballistic medium with pieces saved during the removal process and/or new/additional material that is available for purchase on our website

### **Step Three: Reattach the Shooting Panel and Collar**

Place the Shooting Panel inline with the bolts and reattach the reflective collar. See your Bullet Bunker's Owner Manual for more information.



# Scout & Scout Recon



## Scout Recon

With a 15"W x 25"H front face, the Scout Recon gives you the freedom to roam. The Scout Recon comes with wheels and a retractable handle, making it easier to bring inside and out.

**Trap Dimensions: 10.75"L X 19"W X 41"H**

**Weight: 220 lbs. (Height with handle 53")**

**Price: \$1,910**



## Scout

Whether taking it to hunting camp or using it in the backyard. With a 12.5"W x 20.5"H front face, is a safe way to plink. Intended for indoor/outdoor private ranges or basement use .17 - .22 rimfire standard and magnum rounds.

**Trap Dimensions: 10.5"L X 24.5"W X 16.5"H**

**Weight: 125 lbs. (Height with Legs 29")**

**Price: \$1,307**



[thebulletbunker.com](http://thebulletbunker.com)

# 44 LS Magnum XL

Proud to present our latest product, the 44LS Magnum XL, a more versatile and capable bullet trap.

**NEW!**



## 44 LS Magnum XL

The first trap to combine the capability of the of the LS series with pistol rounds, AND the very popular .223, .556 and 7.62 rifle rounds.

**Trap Dimensions: 32"L x 20"W x 36"H**

**(Height with Stand and casters is 78")**

**Weight: 950 lbs**

**Price: \$2,825**

**Bullet Stopping Power!**





# 44 LS Series

Take pistol shooting to a whole new level, the 44LS series is PERFECT for gunsmiths and pawnshops looking to function test pistols. The 44LS is available in three sizes: the 44LS, 44LS Magnum 20, and 44LS Ultra Magnum.

Perfect for Concealed Carry Courses/Instructors with the extra space to teach those first time shooters.



## 44 LS

Trap Dimensions: 16"L X 24"W X 12"H  
(Height with Legs 29")

Weight: 250 lbs.

Price: \$1,376

**BIG**



## 44 LS Magnum 20

Trap Dimensions: 16.5"L x 33.25"W x 36.5" H  
(Height with Legs is 44.75")

Weight: 500 lbs.

Price: \$2,323

**BIGGER**



## 44 LS Ultra Magnum

Trap Dimensions: 16.5L x 52"W x 56"H  
(Height with Legs is 67.75")

Weight: 1200 lbs.

Price: \$3,180

**BIGGEST**



## 44 LS Recon

Trap Dimensions: 25"L x 26"W x 36.7"H  
(Height with Handle is 45.6")

Weight: 145 lbs.

Price: \$2,170

**BIG & MOBILE**



[thebulletbunker.com](http://thebulletbunker.com)

# Sniper III Elite



The shooting face height can be adjusted from 4in to 6ft 3in high. A creative solution to challenging shooting scenarios.

## Sniper III Elite

Redesigned with a hinged collar for easier front panel replacement & ballistic medium cleaning, the Sniper III Elite is the ultimate mobile and adjustable Bullet Bunker! With a 15"W X 19"H front face, this trap is designed for Military and Police sniper units. The large tires covered with steel runner making it easy to move indoors and out. There are four retractable legs that are deployed to give The Sniper III Elite its stability — and for changing target situations, it can't be beat! Can be used for indoor or outdoor ranges.

**Trap Dimensions: 31"L X 30"W X 39"H**

**Weight: 475 lbs (Height with Legs 72")**

**Price: \$3,735**

**Bullet Stopping Power!**





**Full Auto Upgrade is available for most models!**  
**This upgrade reinforces the Bullet Bunkers to support Full Auto Weapons and Dangerous Game Solids.**

The Full Auto option was created to help reinforce Bullet Bunkers against repeated entry and dangerous game solids. When it comes to repeated entry, a full auto weapon often shoots so many bullets through the same exact spot that they can start to tunnel through the medium and hit the back wall. Dangerous game solids can penetrate just as hard.

The Full Auto option stops any chance of a bullet getting through by inserting a 1/2" piece of AR-500 steel in the back of the Bullet Bunker 1/2" from the rear wall. If any bullets make it through the ballistic medium, they will hit the AR-500 and stop! A .50 BMG can't even scratch this type of steel -- it's a failsafe that no shoulder-held rifle can penetrate.

**Accessories:**

**Increase mobility and target height or replace your ballistic medium. Accessories fit most bullet bunkers.**

2' Stands	\$312
3' Stands	\$365
44LS Magnum XL 72" Stand	\$165
Lifting Lugs:	\$104
Casters:	\$156 - \$312
Super Sack - 2000lbs	\$680
Medium Replacement - 50lbs	\$50

**Replacement Panels - with Pre-Drilled Holes**

Scout:	\$41.59
Scout Recon:	\$51
44LS Series -	Starts at \$55.59
Magnum 20:	\$110.59
Desert Storm 20:	\$157.25
Freedom 20:	\$155.59
Kryptonite 20:	\$195.59
Goliath Series:	Starting at \$299
Sniper III Elite	\$79.59
Scorpion	\$37



# Freedom 20 & Freedom 20 Kit

AVAILABLE IN  
FULL AUTO



## Freedom 20

With a 24W x 32H front face, it's called Freedom 20 because this trap gives the shooter the "freedom" to shoot anything up to and including all the dangerous game rounds. Designed for shooters who have trouble at the range for shooting too big. The Freedom 20 offers exactly that, the "freedom" to shoot BIG! Test rifles on this model included .375 H&H, .416 Rem. Mag., .458 WIN Mag., and all the Nitro Express rounds.

**Trap Dimensions: 33"L X 30.25"W X 39.5"H**

**Weight: 525 lbs.**

**Price: \$3,242**

**Full Auto Option: \$ 4,394      FA Weight: 825 lbs.**

## Freedom 20 Kit

This is an unassembled kit of our top seller Freedom 20 that you bolt together yourself. Great option if you want to put it in your basement and have a tight stairwell.

**Trap Dimensions: 33"L X 26.5"W X 33.25"H**

**Weight: 800 lbs.**

**Price: \$3,112**

**Bullet Stopping Power!**



# Freedom Elite



## Freedom Elite

We have taken our best-selling model, The Freedom 20 Model, and given it ALL the bells and whistles we offer. The Freedom Elite Model comes standard with a new two-tone paint finish, 2' stand, 4" casters, 12,000 lb. test lifting lugs, full-auto rating with AR-500 steel plate, and our newest feature, a swing open hinged deflective collar for easy access and maintenance. Test rifles on this model included .375 H&H, .416 Rem. Mag., .458 WIN Mag., and all the Nitro Express rounds

**Trap Dimensions: 31"L X 30"W X 39"H**

**Weight: 1431 lbs. (Height with Legs 72")**

**Price: \$4,842**



[thebulletbunker.com](http://thebulletbunker.com)



# Goliath Series Traps



**Goliath 4 X 4**

**AVAILABLE IN  
FULL AUTO**



**Goliath 3 X 6**

## Goliath Series Traps

Our Goliath series traps are designed to cover as much wall or range space as needed. There are four sizes with eight varieties to choose from, this trap is ideal for any space you would like to cover. Great for indoor & outdoor ranges! Shoot prone, kneeling, standing or from the bench in your very own basement. We also offer stands for the Goliath. Move them around your man cave or link them together for complete range-wall coverage. .22 – 700 Nitro Express Approved.

	Dimensions	Shooting Area	Weight	Price
<b>Goliath 3x6</b>	34"x35"x76"	28"x64"	2000 lbs.	<b>\$6,894</b>
<b>Goliath 3x6 (FA)</b>	34"x35"x76"	28"x64"	2400 lbs.	<b>\$7,489</b>
<b>Goliath 4x4</b>	33"x48"x52"	42"x42"	2000 lbs.	<b>\$5,815</b>
<b>Goliath 4x4 (FA)</b>	33"x48"x52"	42"x42"	2400 lbs.	<b>\$6,751</b>
<b>Goliath 4x6</b>	33"x48"x76"	42"x66"	3250 lbs	<b>\$7,918</b>
<b>Goliath 4x6 (FA)</b>	33"x48"x76"	42"x66"	4000 lbs.	<b>\$9,121</b>

**Bullet Stopping Power!**



# Titan



## Titan

Our newest trap, the Titan. The Titan can handle just about anything. Created for use with large rounds, the titan comes with a hinged collar for easy replacement of the face panel. Top is also equipped with double doors for easy rubber medium replacement. The box is lined with AR 500 steel and roughly 3x stronger making it able to handle the larger rounds.  
.22 – .50 BMG Approved.

**Trap Dimensions: 52"L X 48"W X 48"H**  
(height with stand 76")

**Weight: 4430 lbs.**

**Price: \$10,600**



[thebulletbunker.com](http://thebulletbunker.com)

# Scorpion Clearing Box



## Scorpion Clearing Box

Using our already patented and tested technology, the Scorpion is our latest system developed for clearing pistols and rifles. Able to stop all commercial pistol rounds and rifle rounds up to and including .300 WIN MAG, the Scorpion is a force to be reckoned with. Not only that, it will stop 250 accidental discharges before any maintenance is needed -- and the only maintenance it needs is to change one ballistic sheet (at a low cost of \$29.99.)

Like its namesake, the Scorpion is small and compact, only 2'10" tall. It comes with legs that can have the clearing box on a 45 degree angle or at 90 degrees and upright, if the Scorpion is mounted on a shelf or stand. Powder coated inside and out for weatherproofing, the mighty Scorpion can be used for both indoor and outdoor ranges.

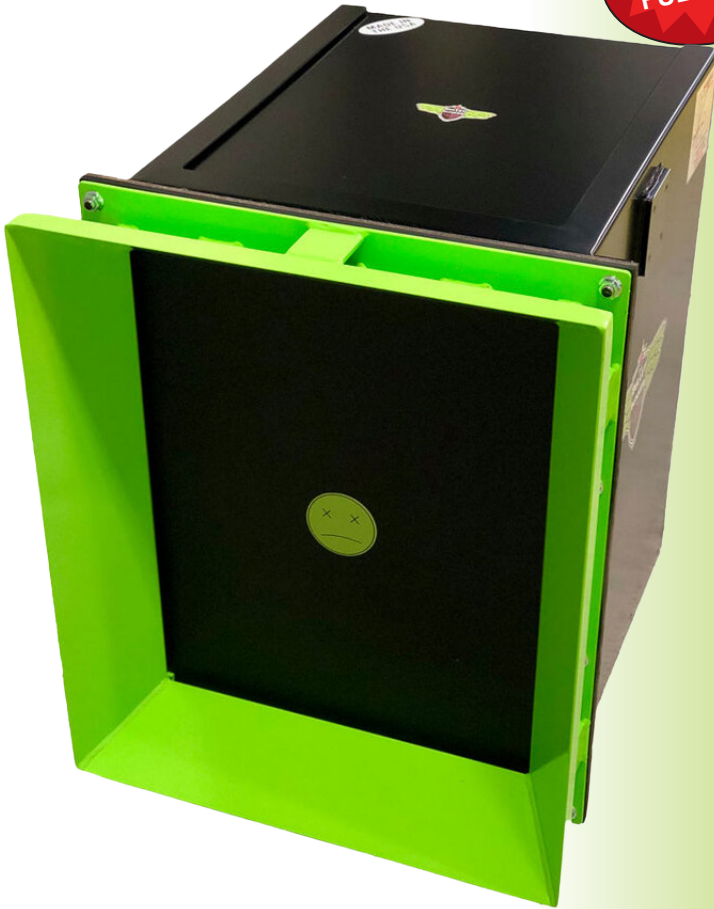
**Trap Dimensions: 15"L X 24"W X 24"H**  
**Weight: 455 lbs** (Height with Legs 33")  
**Price: \$2,295**

**Bullet Stopping Power!**



# Desert Storm 20

AVAILABLE IN  
FULL AUTO



## Desert Storm 20

With a 20W x 25.5H front face, this one's a trooper! The target area on the Desert Storm 20 is sized to hold the NRA silhouette target perfectly. It's great to sight in all of your high power rifles and perfect for the shooter eager to function test or dial in without relocating to shoot heavy. Approved for .22-700 Nitro Express.

**Trap Dimensions: 33"L X 26.5"W X 33.25"H**

**Weight: 725 lbs.**

**Price: \$2,749**

**Full Auto Option: \$3,678    FA Weight: 825 lbs.**



[thebulletbunker.com](http://thebulletbunker.com)

# Talon 21



## Talon 21

The biggest, deepest, and toughest Bullet Bunker of all, the Talon 21 can stop most everything. The interior is lined with 5 walls of AR-500 steel. Designed for shot guns and others shot from the shoulder, this beast has yet to be defeated. The mounted face and heavy duty collar allow for easy face replacement. Comes with stand.

**Trap Dimensions: 36"Dx22"Wx32"H**

**Weight: 1000 lbs**

**Price: \$7,375**

***\*Full Auto Capable***

**Bullet Stopping Power!**





# Kryptonite 20



## Kryptonite 20

With a 24W x 32H front face, this trap has a heavily modified interior hull lined with 5 walls of AR-500 steel. Kryptonite 20 can stop all rounds from, .357 MAG-50 BMG A/P at any distance and in full auto. With pinnacle stopping power, this unit will stop any round you can fire from your shoulder.

**Trap Dimensions: 26"L X 30.125"W X 39.5"H**

**Weight: 1900 lbs.**

**Price: \$5,654**



[thebulletbunker.com](http://thebulletbunker.com)

**CAUTION:** Please practice safe lead removal. Use caution when removing bullets by wearing protective gloves and/or washing your hands after disposal. Dispose of all lead properly following EPA guidelines.



**There's a Bullet Bunker model to suit your every need!**

We offer a complete line of Bullet Bunker models for nearly any situation. From complete coverage to the ground with our Goliath to the addition of shock absorbing concrete with The System, our excitement about all our bullet containment products can't be contained.

### **TARGETS, ACCESSORIES AND MORE**

Targets can be attached to the Bullet Bunker however you want them. Tacking, stapling, taping, you name it. With the Bullet Bunker, target practice is easy and versatile.

**Contact us at:  
Universal Bullet Traps DBA  
The Bullet Bunker  
405 Industrial Parkway  
Norwalk, OH 44857  
419-660-0228  
thebulletbunker.com**

January 2023